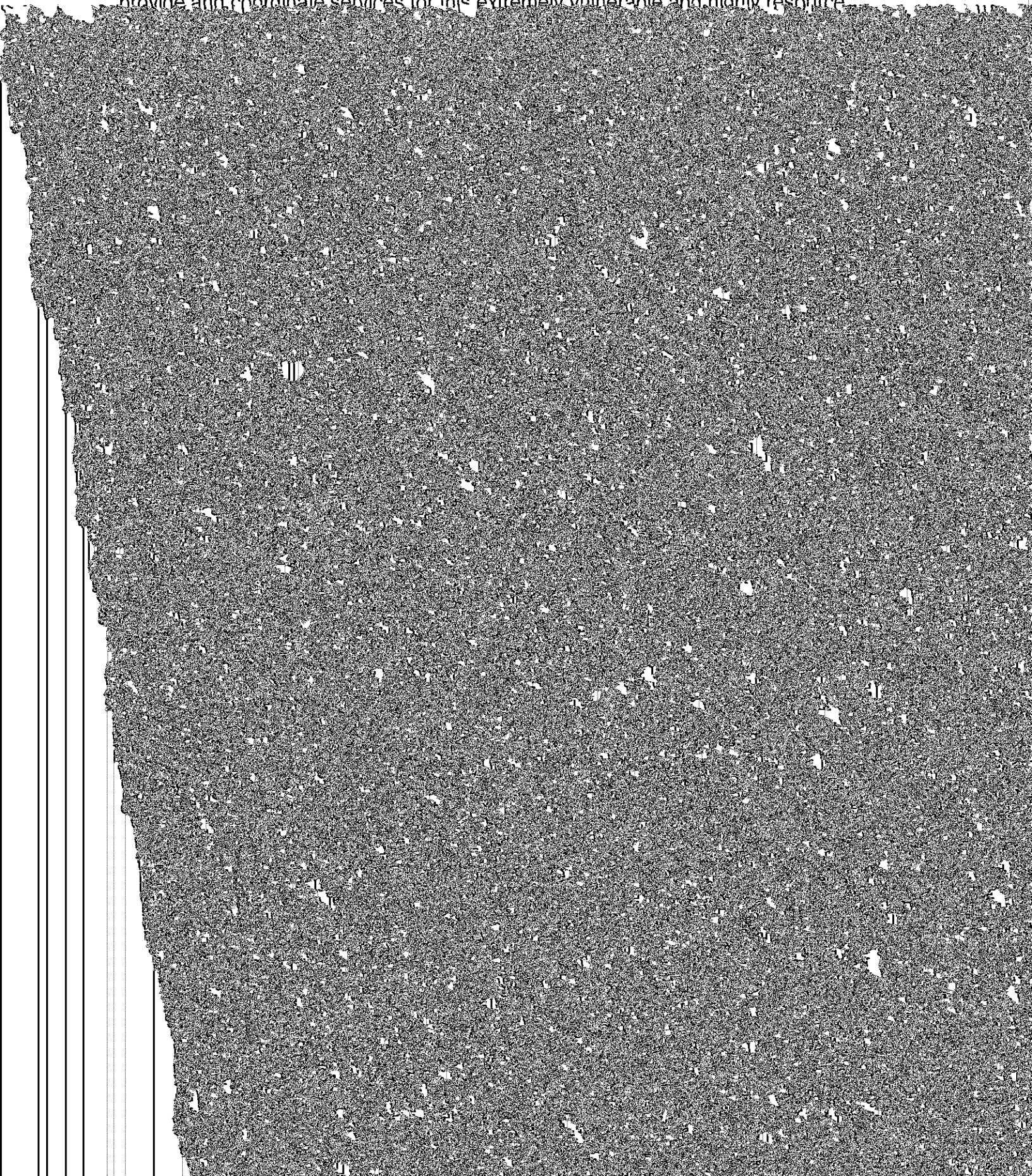






high quality, Monroe County needs additional resources to expand our capacity to provide and coordinate services for this extremely vulnerable and highly resource





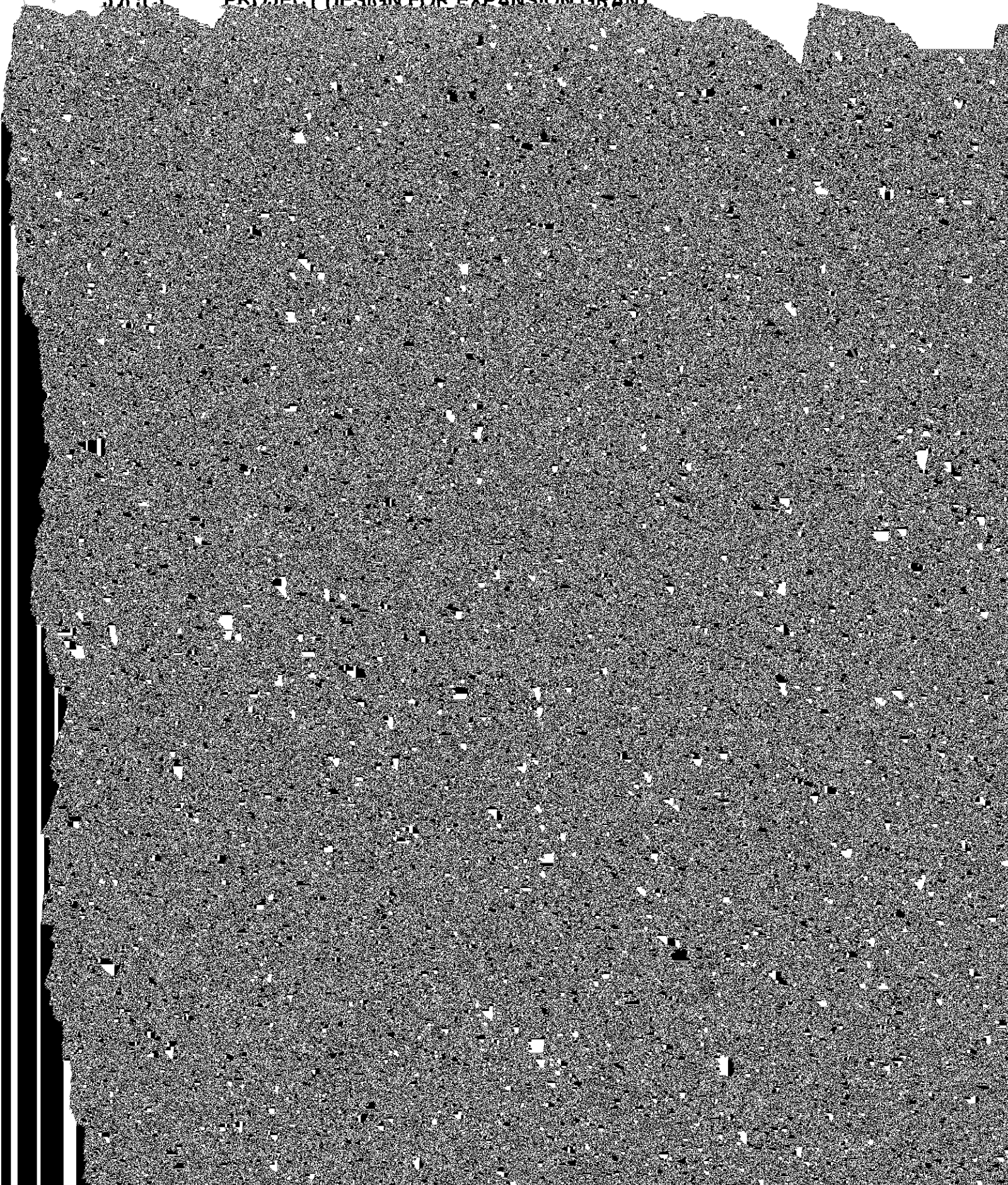












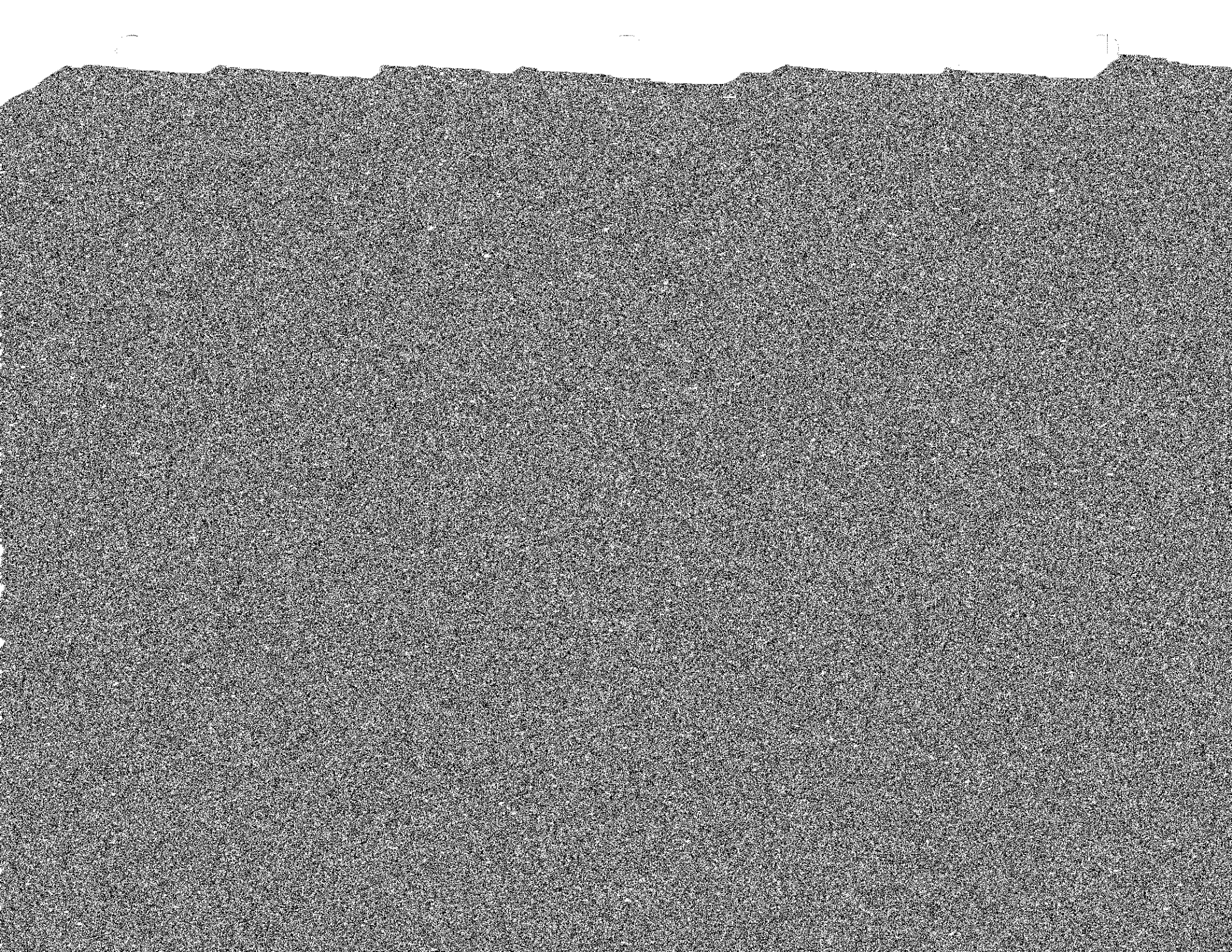












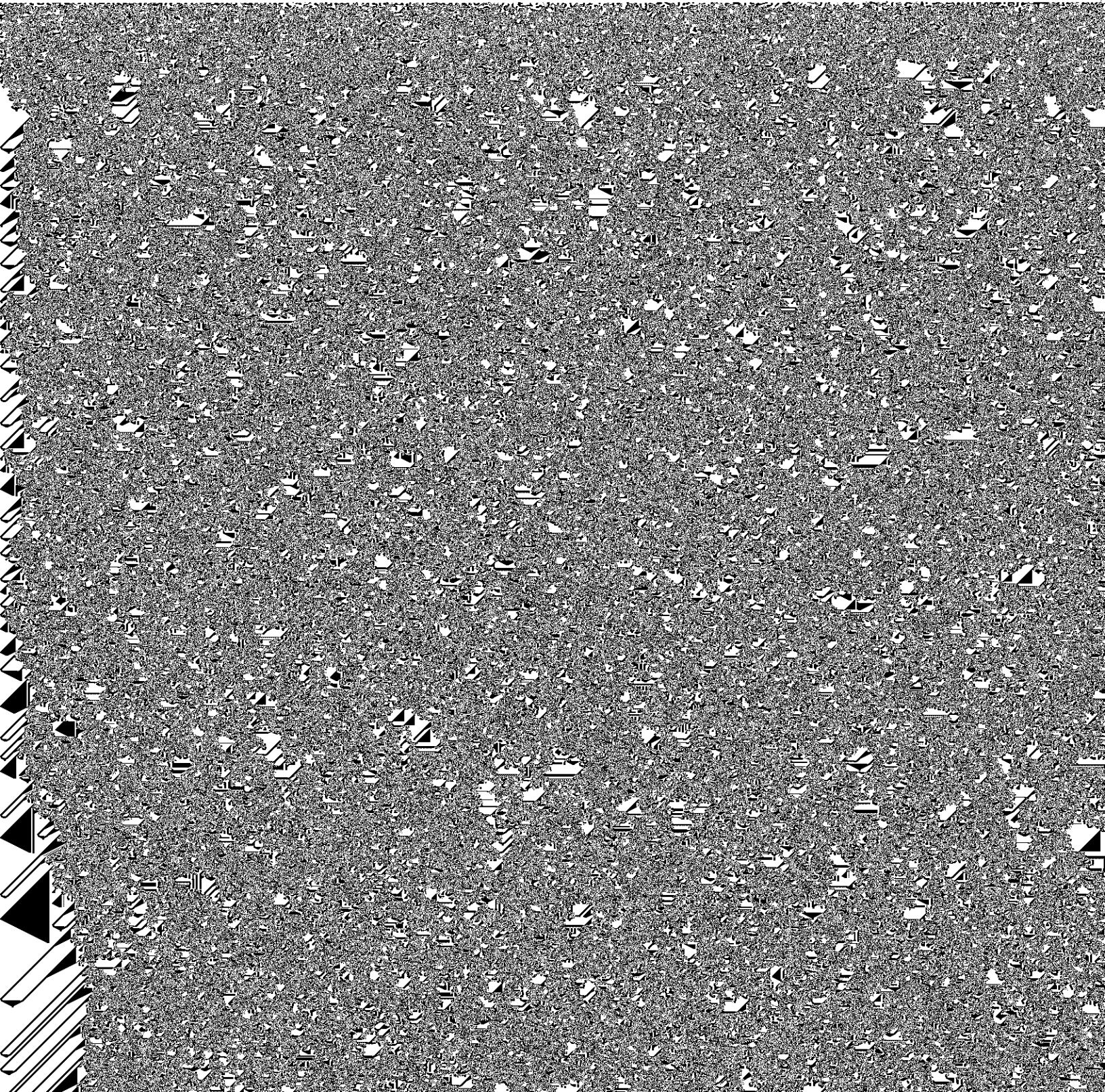






In order to ensure adequate referrals for the Reentry Program, Monroe County worked diligently to enhance communication and cooperation with the courts and criminal justice staff. Through these sustained efforts, Monroe County was able to increase referrals from several important municipal partners, including Pre-Trial Services, the Public Defender's Office, the State Attorney's Office, Court Options, and the Court.

In order to increase Reentry Program participant involvement with supportive services,









and deliver appropriate recovery-oriented services for adults, and juveniles within the adult system, with mental illness or co-occurring mental illness and substance use







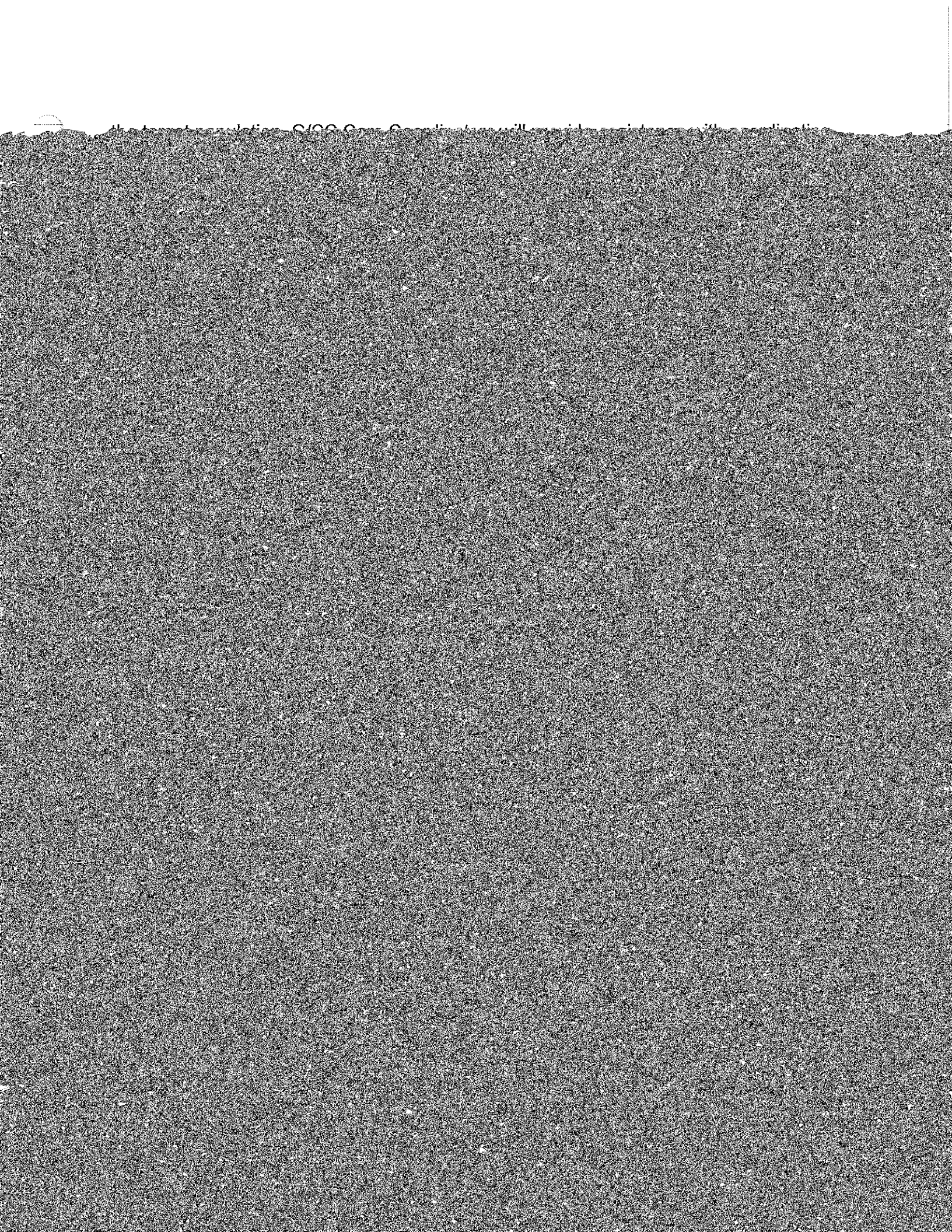




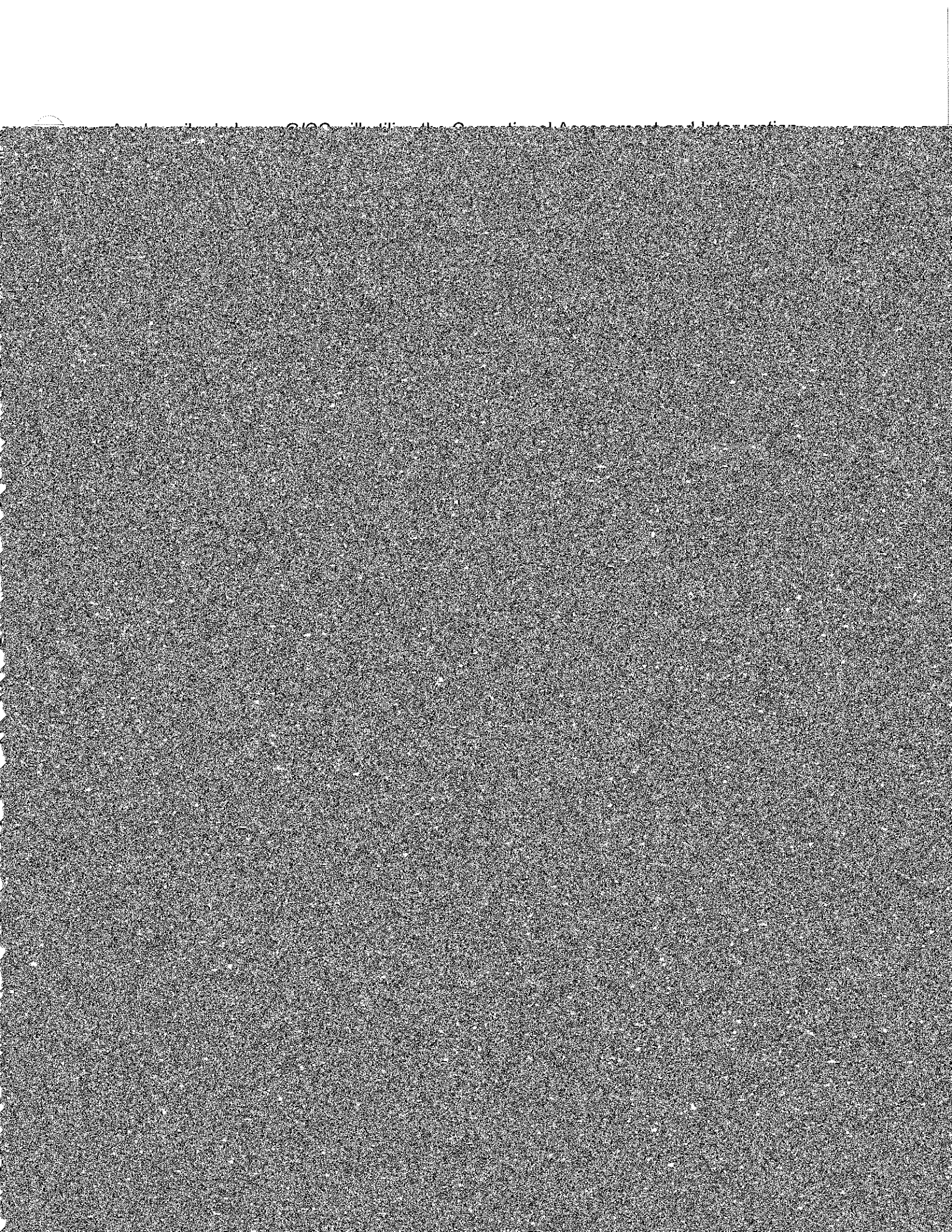


admission and treatment, discuss requirements under the Florida Mental Health Act,





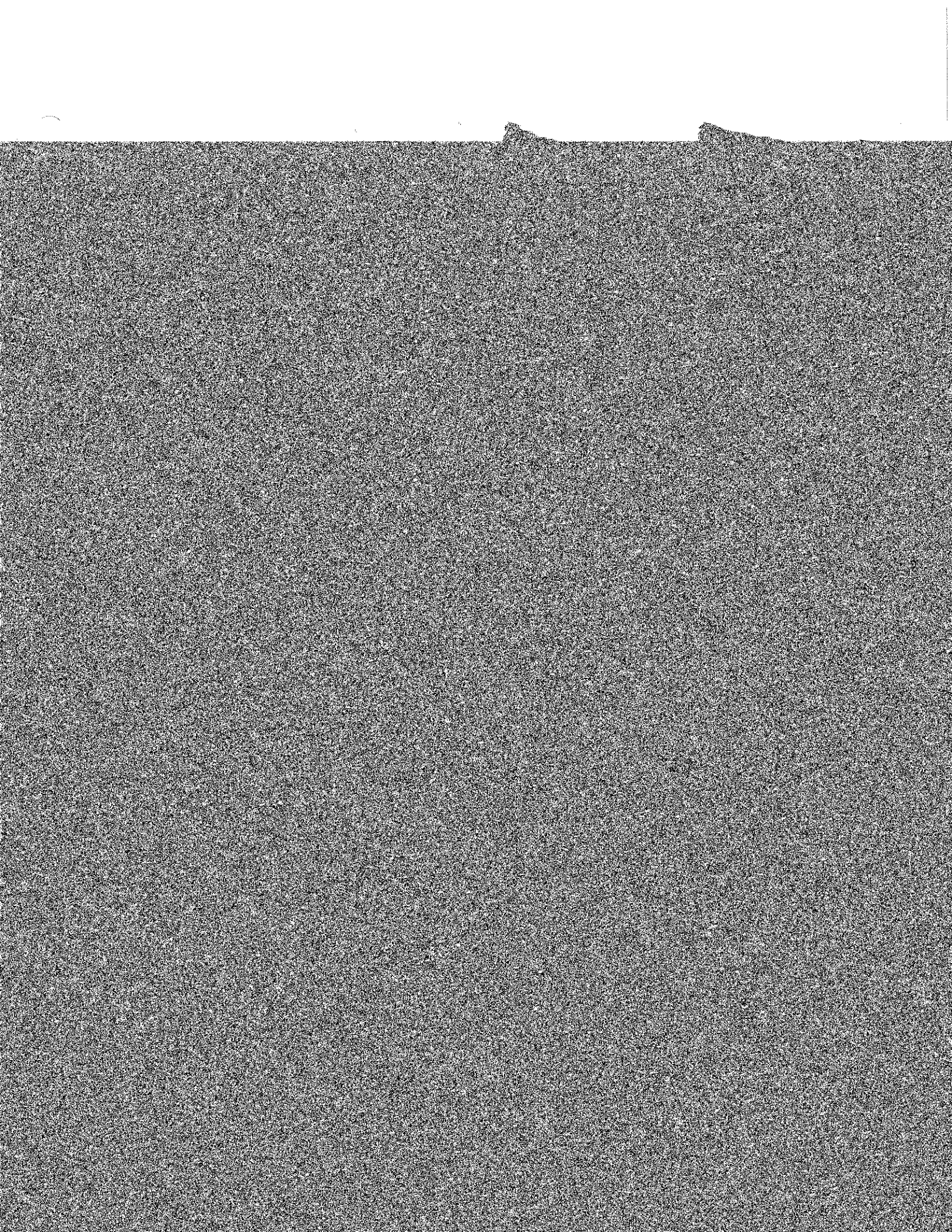






































reduces costs associated with caring for adults with severe mental illness. There are a







2020-10-10 10:10:10









