



T U i i S F i

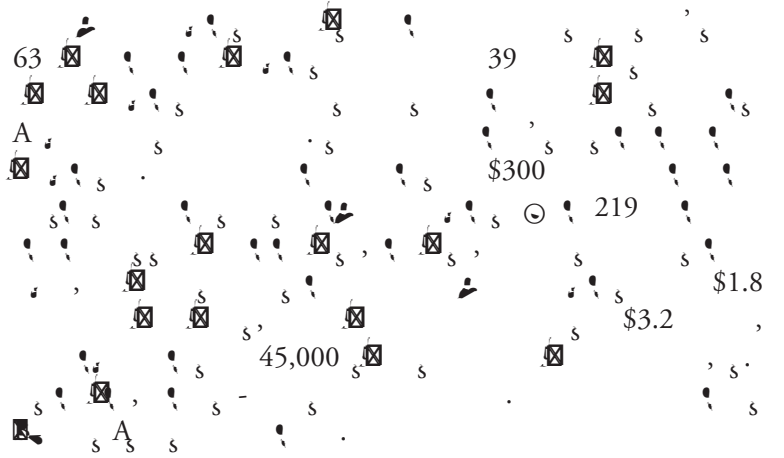






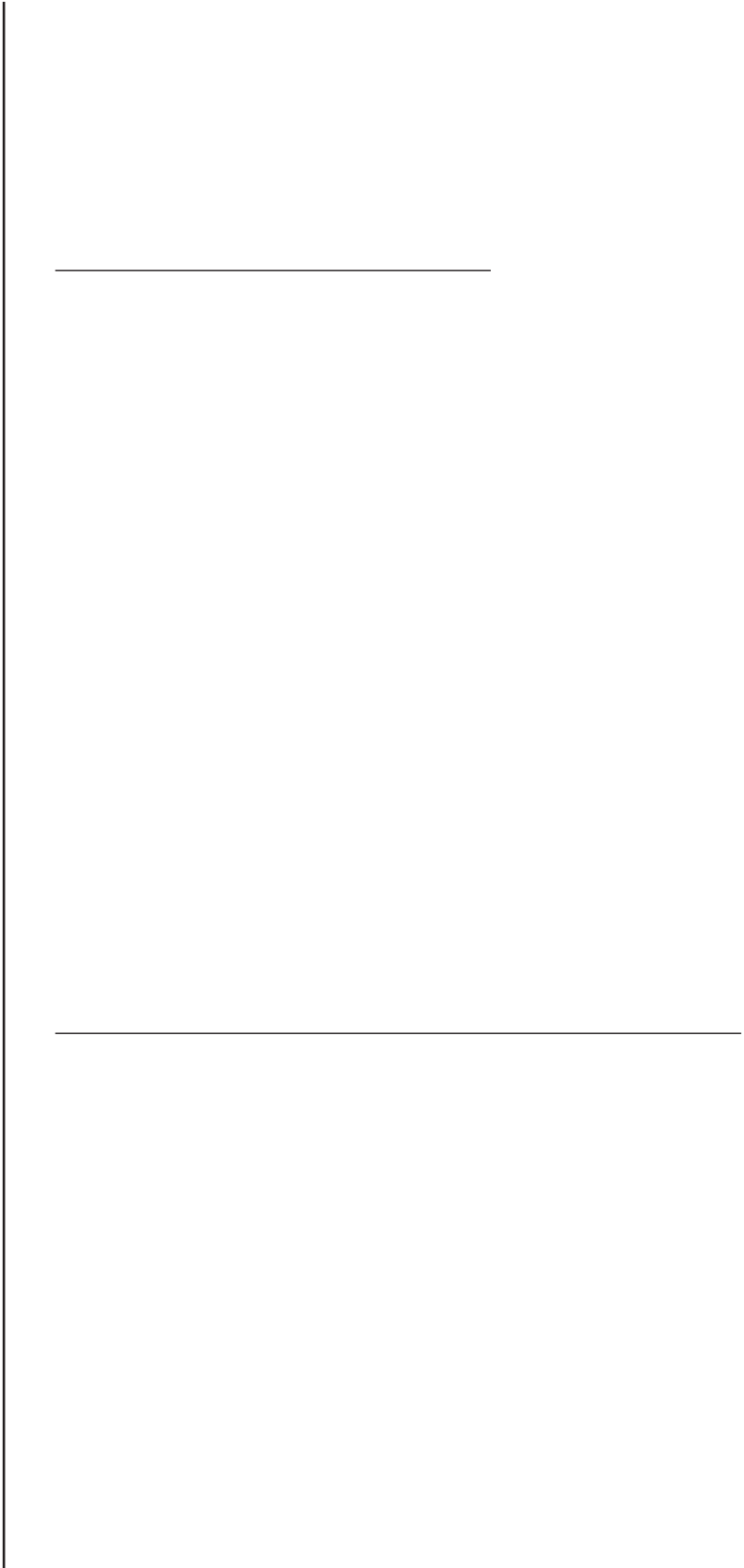


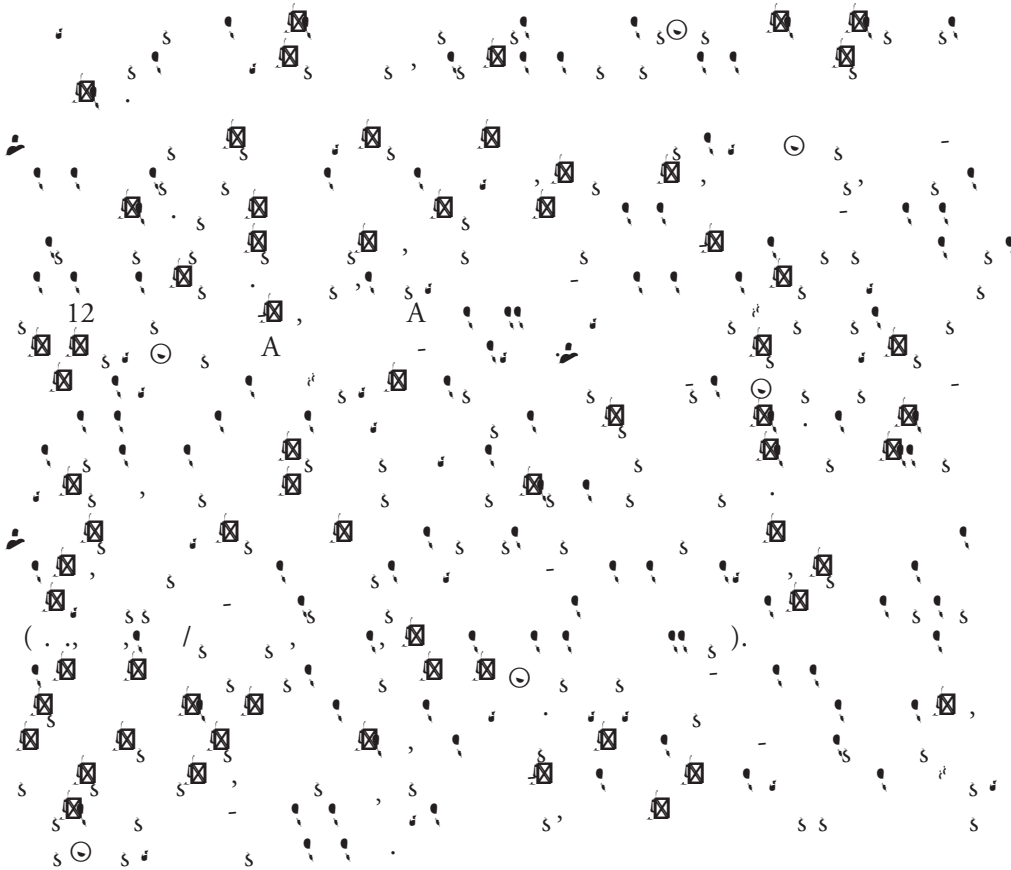
Table of Contents

E i S mm	3
I i	5
P E i	5
P E i Fi i	6
. A A s s	

List of Tables

1.      20





Introduction

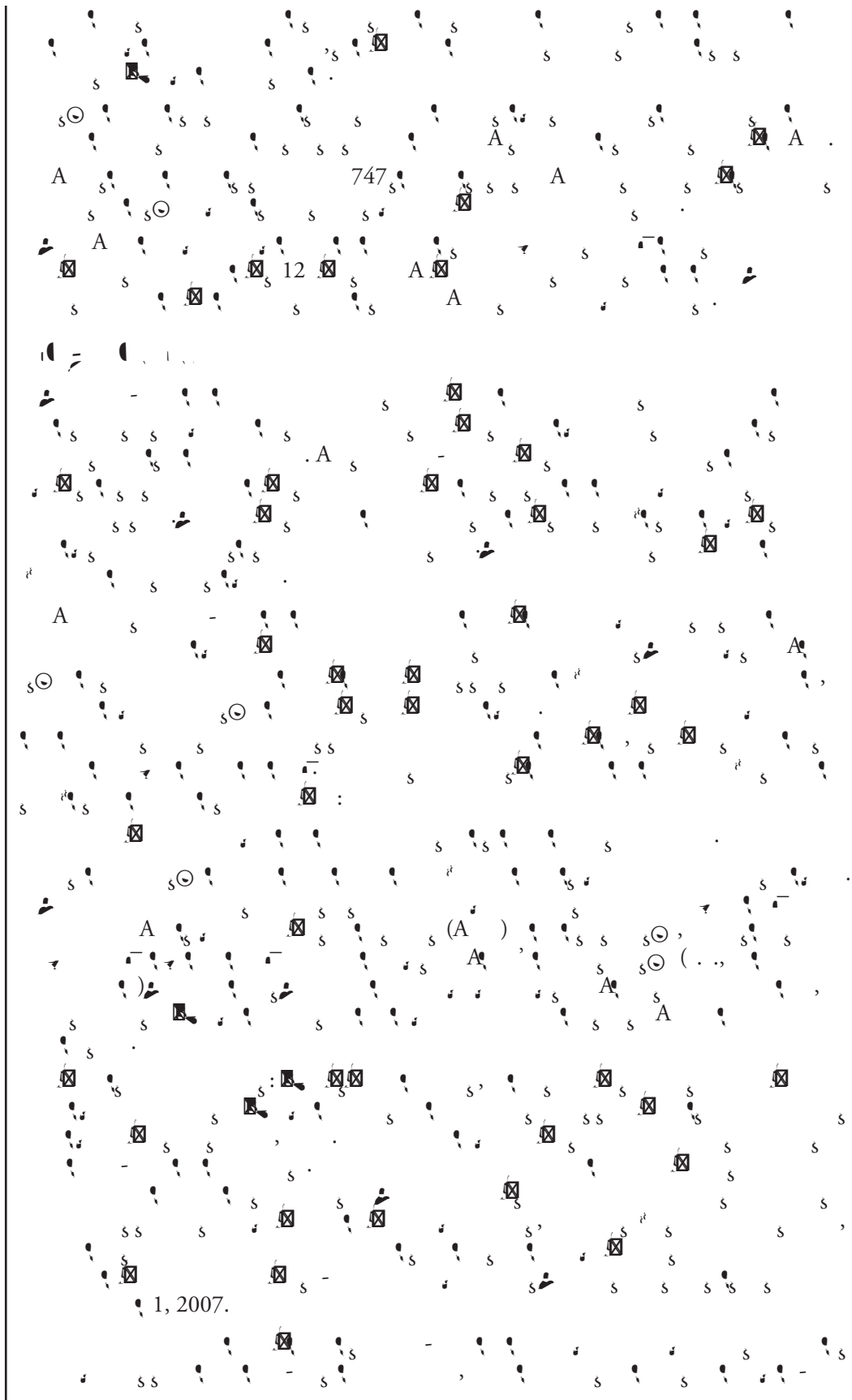
A () (A) : (1) A (2) (-) () (3)

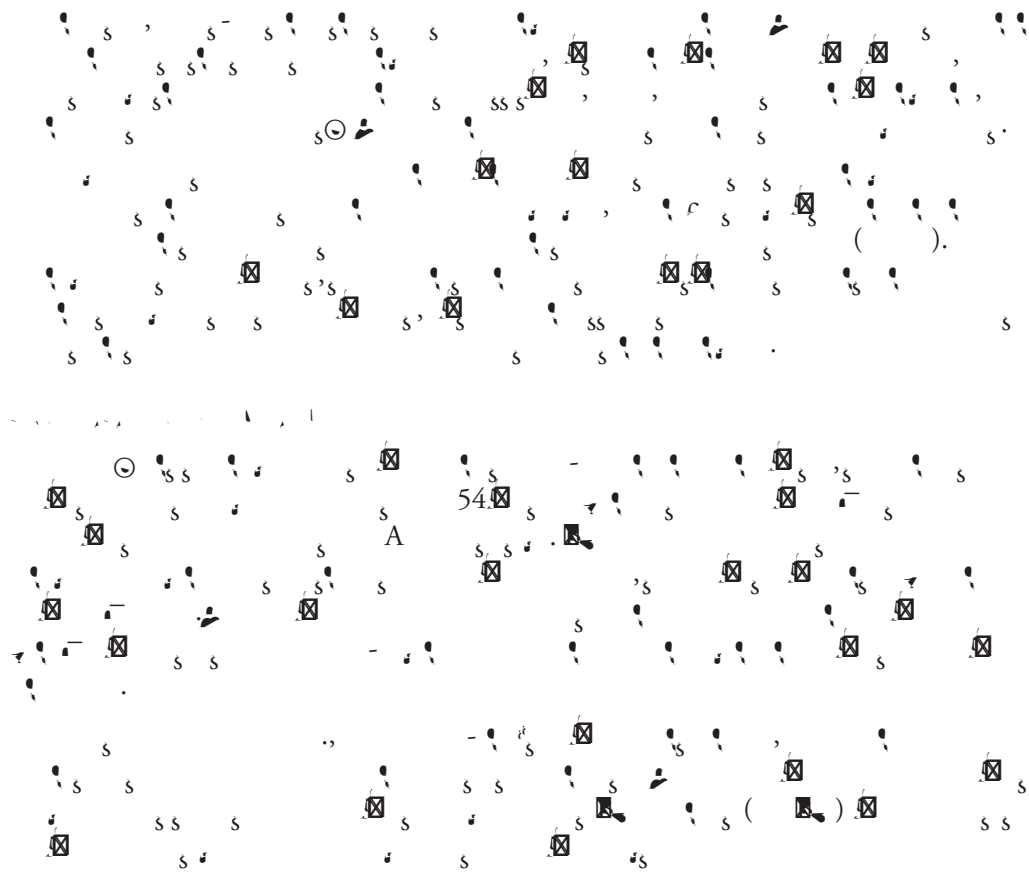
Process Evaluation

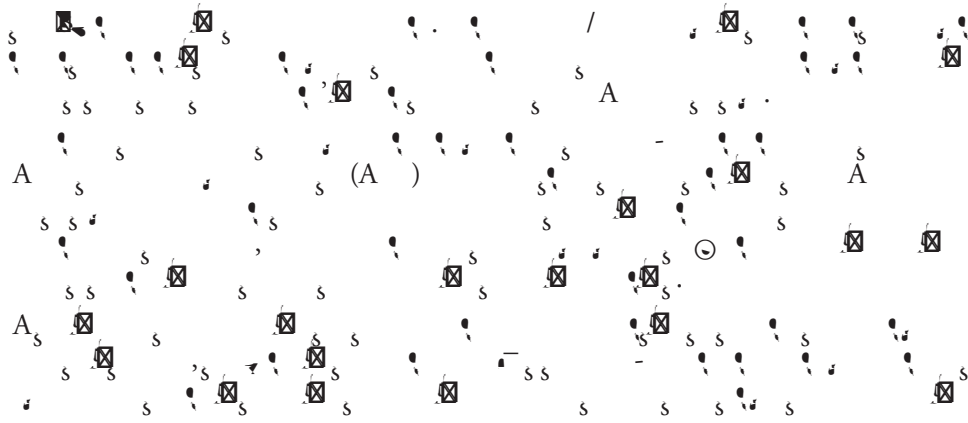
A 2 A :

A, 60-80, 7-15, 1, 2006, 30, 2007, 2,076, 965
 (46%), 1,111, (54%).
 44%, 3:00, 11:00
 72%, 4.8, 28%
 464, (47%), 3

Phase II









s - it s ; s . s ; s . s , it ;

(67%) - , 4% 37% 9%

(. ., A.A., A., . ., s .).

1-12, s

13

12, 71%

16%

13

44%

22%

10%

1, 13%

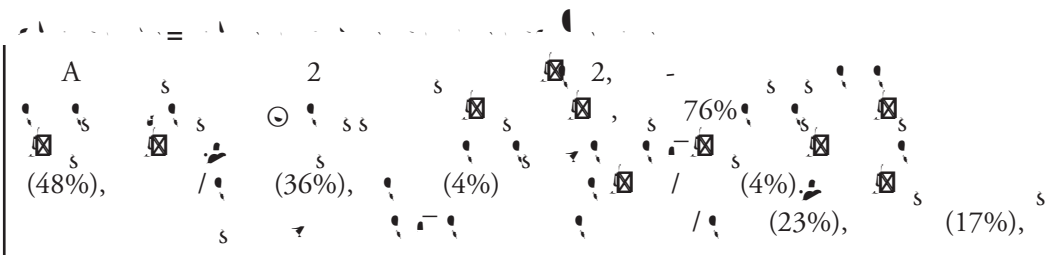
A s.

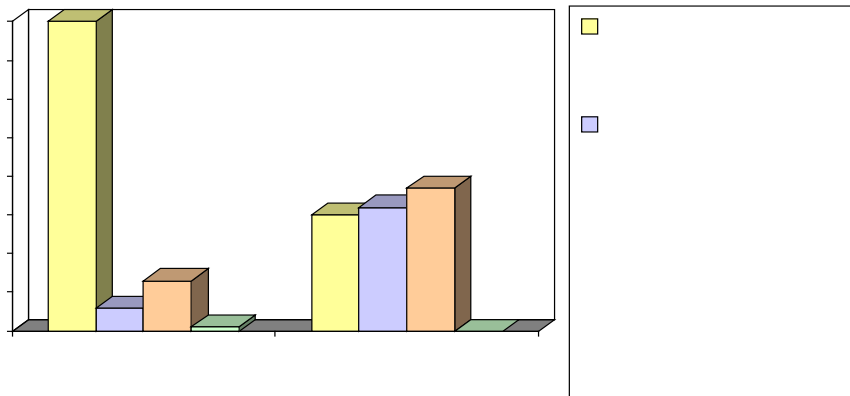
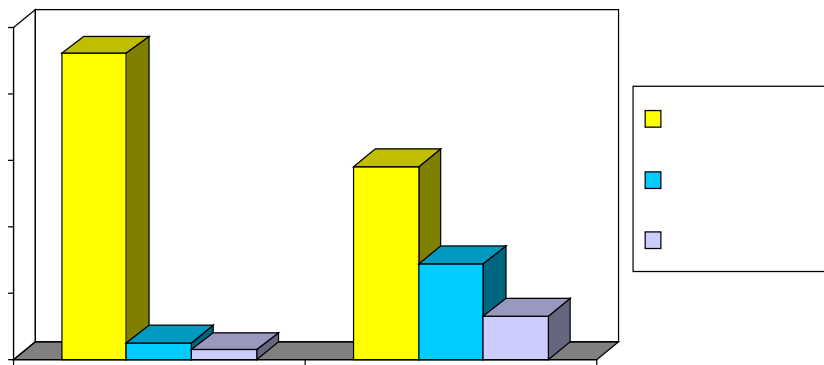
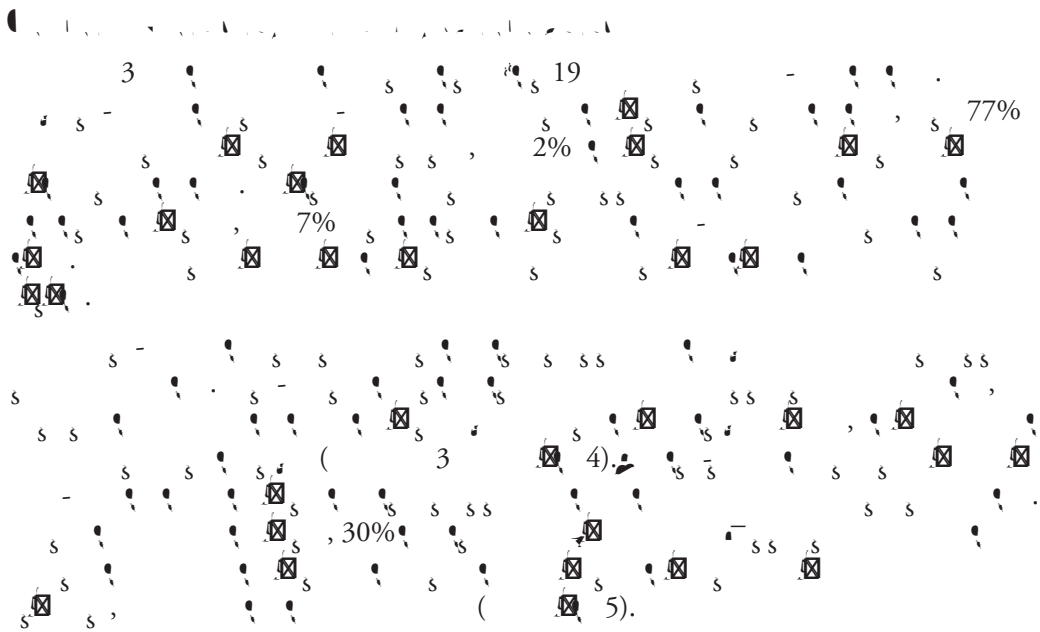
92%

90%

8%

1. A

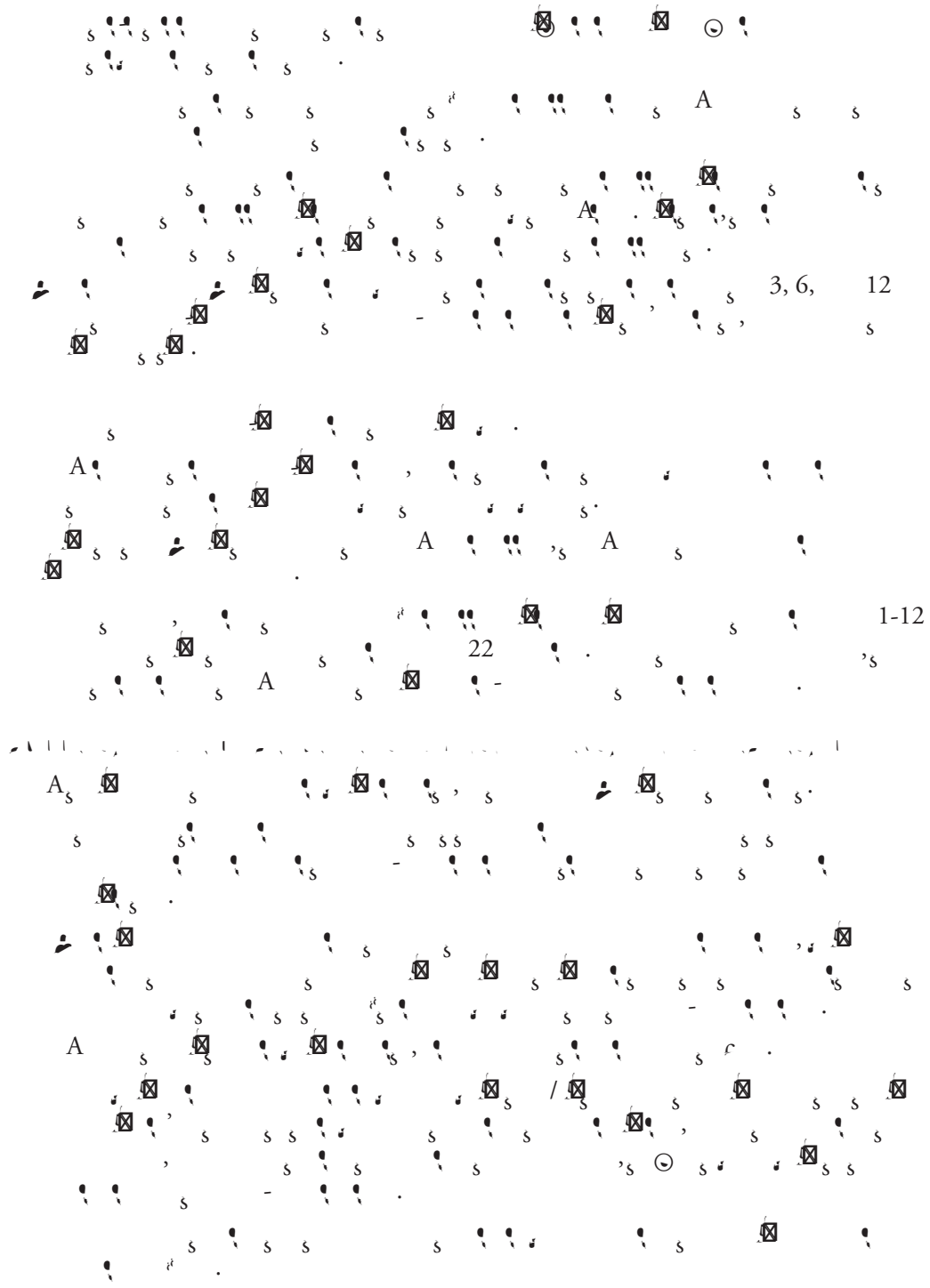




A
 (= 45) 3- 62% (= 63) 6- 56%
 12- 52% (= 11) 6) A
 80%

#1-21 (5) A
 (61%) 29%
 18 18% 18
 27% (1-4, = 59)
 18

()
 13-21
 A (6) 33
 A 6-7
 A -A



	80%	=248
	13%	=41
	6%	=20
	1%	=3
(314)		
	13%	=32

Table 4. Sobriety, Vocational Activities and Housing Status during Follow-up among Successful Graduates

Sobriety		
3 months	56%	=95 (169)
6 months	53%	=63 (120)
12 months	44%	=30 (69)
Vocational Activities		
3 months	62%	=63 (102)
6 months	59%	=47 (80)
12 months	52%	=11 (21)
Housing Status		
3 months	61%	=63 (103)
6 months	56%	=45 (80)
12 months	52%	=11 (21)

Table 7. ARF Referrals - Substance Abuse Reported at VIP-ER Admission⁸

A	80%	=24
/	8%	=2
/	3%	=1
	3%	=1
	3%	=1
	3%	=1
	44%	=13
	20%	=6
	14%	=4
	10%	=3
A	3%	=1
	3%	=1
	3%	=1
	3%	=1
	47%	=14
	37%	=11
1 3	3%	=1
1 2	13%	=4

⁸Analyses are based on ARF referrals from classes 13-21.

Table 8. ARF Referrals - VIP-ER Program Discharge Status⁹

	75%	=18
	8%	=2
	17%	=4
	9%	=2
	48%	=10
	20%	=4
	9%	=2
	14%	=3
	59%	=14
	25%	=6
	16%	=4
	100%	=18
	51%	=3
	33%	=2
	16%	=1

Table 9. ARF Referrals, Sobriety, Vocational Activities, and Housing at Follow-up for Program Graduates¹⁰

ARF Referrals		
3	1	39%
Sobriety		
3	2	50%
Vocational Activities		
3	2	50%

¹⁰Analyses are based on ARF referrals from classes 13-21.