



Writing the director's statement for this semester's newsletter, it seems likely that all our information could be out of date by the time the newsletter reaches the reader's hands. We move into this semester

Humanities Institute will continue to follow the best practices recommended by USF and have adopted a hybrid model for our events this fall to allow us to quickly adapt if conditions change.

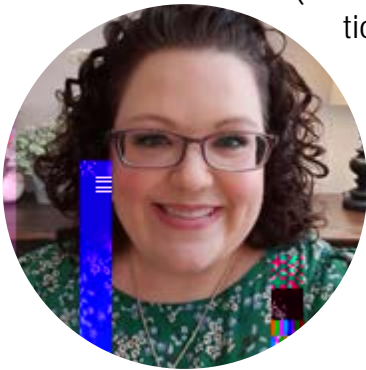
Despite the ongoing uncertainty due to the pandemic, HI has a wonderful semester planned. We are launching the USF Humanities

of providing time and resources to USF faculty pursuing compelling scholarly or creative topics. Similar fellowships are offered by all of our aspirational peer institutions, and establishing this program is a major milestone.

Additionally, we have two incredible guest speakers who will give presentations on the real world applications of intersectional humanities scholarship, and we will resume our popular Humanities & Hops faculty speaker series as well as the community book group this fall.

One of the unexpected positive outcomes of doing so many events online has been the ability to include people who might otherwise be unable to participate in our events due to time or geographic limitations. Even as we attempt to transition back to in-person programs, we're doing our best to maintain digital options for those who prefer them.

I encourage you to connect with us on either Instagram or Facebook (@usfhuman) for the most up to date information on event times and locations. Wishing everyone a happy, healthy fall. Go Bulls!



Liz Kicak, M.F.A.  
Director



UNIVERSITY of  
**SOUTH FLORIDA**  
College of Arts & Sciences

**Humanities Institute**

4202 E. Fowler Ave. CPR 107  
Tampa, FL 33620  
813-974-3657

[www.humanities-institute.usf.edu](http://www.humanities-institute.usf.edu)



Director | Liz Kicak  
[ekicak@usf.edu](mailto:ekicak@usf.edu)

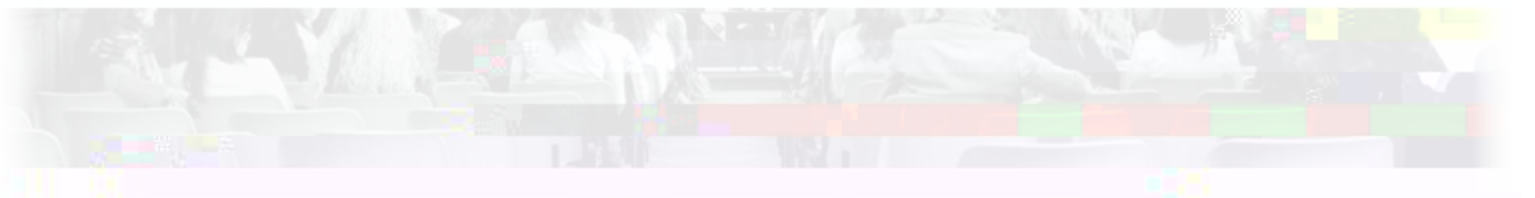
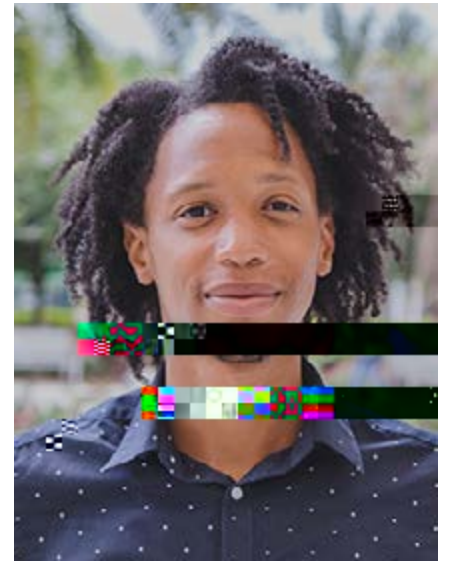
Program Assistant | Jade von Werder  
[jvonwerder@usf.edu](mailto:jvonwerder@usf.edu)

**Faculty Advisory Board**

- Aaron Augsburg (SIGS)
- Aisha Durham (Communication)
- Nicole Discenza (English)
- Ylce Irizarry (English)
- John Lennon (English)
- Barbara Lewis (Library)
- Karla Davis-Salazar (Anthropology)
- Catherine Wilkins (Honors College)

*The Mission of the Humanities Institute at the University of South Florida is to generate critical dialogue about what connects us to each other and our world, facilitating those conversations through research, education, and community programs.*

Establishing a faculty fellowship program is major achievement for the Humanities Institute. Fellows will receive instructional release time, space in the HI suite, and other resources to support a year-long research or creative proj-





How do our clothing selections relate to colonialism, wealth inequality, and climate change? Join HI's conversation with writer and industry consultant, Aja Barber, on September 14 to learn about the intersection of these and other factors within the fashion industry. Textile production is among the leading causes of environmental damage and climate change. Additionally, most of this production takes place in areas of the world deeply scarred by the legacy of colonialism and continued exploitation based on race, gender, and wealth inequalities.

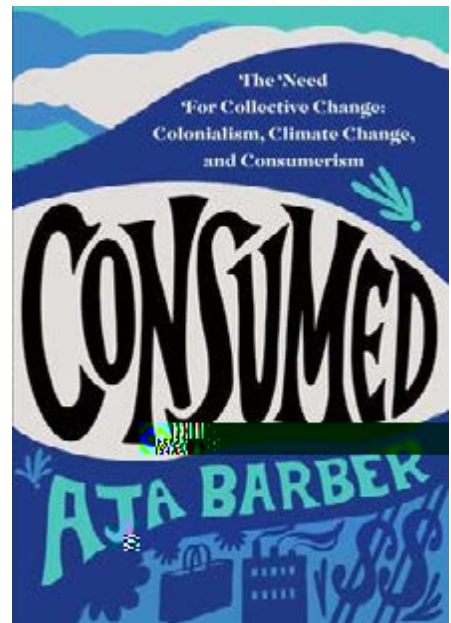
Barber is a regular contributor to publications like *Eco-Age*, *The Guardian*, CNN, and Selfridges and runs incredibly popular social media sites of her own. Her new book, *Consumed: The Need for Collective Change: Colonialism, Climate Change, and Consumerism* explores the culture of fast fashion, greenwashing, sustainability, and social justice. Visit our website for more information.



0 .14.21

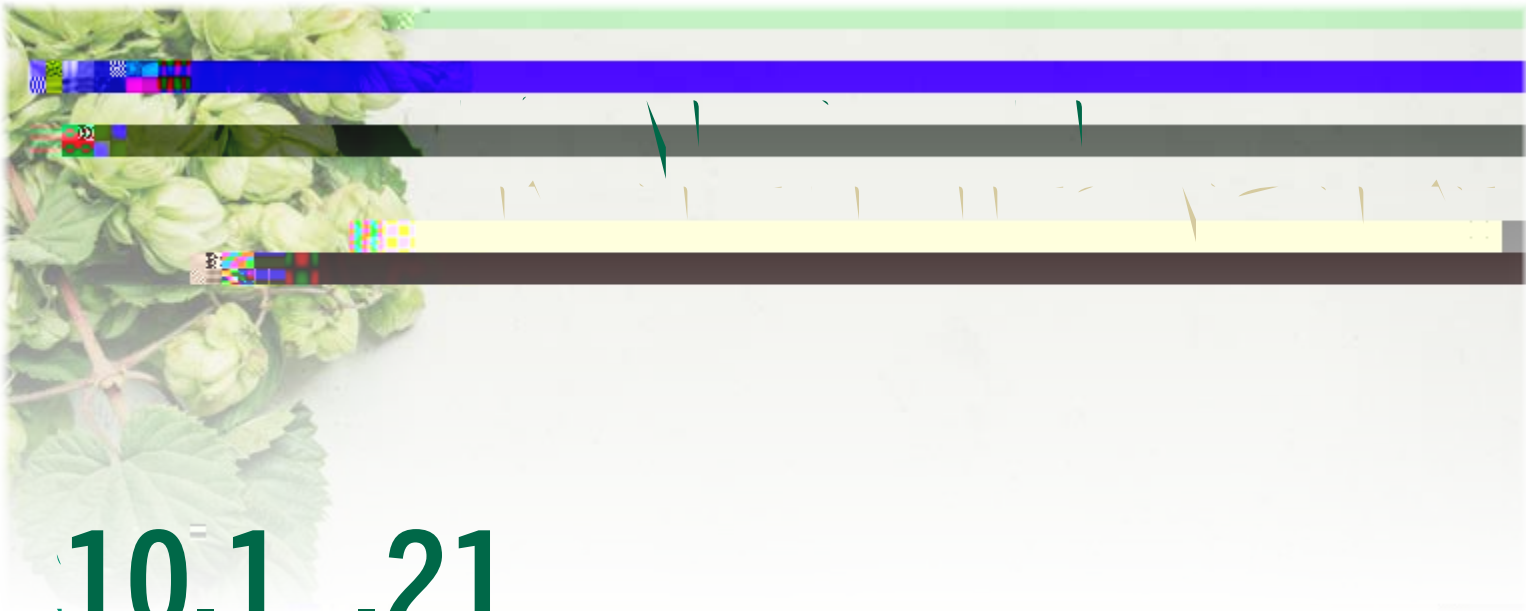
## WHAT IS "FAST FASHION"?

Fast fashion describes the design, marketing and production of mass amounts of poor quality, inexpensive clothes that replicate designer trends. Items are often worn just a few times before they are discarded and the massive increase in consumption, waste, and pollution are major contributors to environmental damage and climate change.









**10.1 .21**

**11.18.21**





Humanities Institute  
4202 E. Fowler Ave. CPR 107  
Tampa, FL 33620  
[www.humanities-institute.usf.edu](http://www.humanities-institute.usf.edu)